

VPL-FHZ57

4,100 lumens WUXGA laser light source projector



Overview

Superb image quality plus low running costs, minimal maintenance, flexible installation and low fan noise

The VPL-FHZ57 laser projector is ideal for a wide range of business, education and entertainment applications. Teamed with our BrightEra 3LCD projection engine, the advanced Z-Phosphor laser light source ensures detail-packed WUXGA resolution images with a generous 4,100 lumens brightness and rich, stable colours. Building on the success of Sony's acclaimed first-generation laser projectors, advanced picture refinement technologies now assure even greater clarity and realism with any input source.

The laser light source allows up to 20,000 hours* of virtually zero maintenance operation without the worry of sudden lamp failures. Constant Brightness Mode maintains the same on-screen light levels throughout the laser source's extra-long lifespan. An automated filter system cuts the hassle of regular dust cleaning. Near-zero maintenance needs are complemented by a range of energy-saving features, driving down total lifetime ownership costs even further.

With a stylish blend-in design, tidy cable management and ultra-low fan noise, the VPL-FHZ57 fits beautifully into almost any environment – from academic institutions, corporate, medical training and public sector organisations to visitor attractions and retail spaces. Seamlessly blend images from multiple projectors to create super-sized displays, or project accurately proportioned images onto angled or curved surfaces. Mount the projector at any angle, even on its side or upside down. Set-up is refreshingly easy with a friendly installation menu.

*Actual hours may vary depending on usage environment.

Features

- **Very high image quality with Sony's advanced BrightEra 3LCD projection engine and Z-Phosphor laser light source**

The Z-Phosphor laser light source is coupled with Sony's acclaimed BrightEra 3LCD projection engine to ensure high 4,100 lumen image brightness with vivid, natural colour reproduction.

- **Constant Brightness**

Constant Bright maintains the same brightness throughout the 20,000 hours recommended life span.

- **Advanced picture refinement technologies**

Picture quality is boosted by advanced processing featured on Sony home cinema projectors. Reality Creation uses a powerful pattern-matching database to optimise every pixel. Contrast Enhancer actively analyses and refines dark and light image areas for sparkling highlights and rich, deep blacks.

- **Crisp, detail-packed WUXGA resolution images**

See the finest detail in PC presentations, videos or multimedia signage with WUXGA (1920 x 1200) 16:10 resolution.

- **Up to 20,000 hours* operation with virtually no maintenance**

The advanced laser light source offers up to 20,000 hours* operation without lamp exchange, reducing lifetime running costs compared with traditional projectors.

*Actual hours may vary depending on usage environment.

- **Hassle-free automatic filter cleaning**

Focus on great-looking images instead of arduous maintenance tasks: new automated filter cleaning system removes dust every 100 hours.

- **Energy saving features**

Reduce running costs even further with convenient energy-saving features: Picture Mute and Auto Dimming.

- **Save time with every presentation**

Quick power On/Off dramatically cuts warm-up time after switch-on before you can start presenting at full brightness.

- **360° free-angle installation capability**

Enjoy greater installation flexibility: position the projector freely at any angle – or its side or even upside down.

- **Powered Wide Lens Shift**

Generous lens shift adjustments give more flexibility for positioning the projector where you need it: close to ceilings or even horizontally offset.

- **Included powered standard zoom lens plus wide choice of lens options**

Installation flexibility is increased by a wide range of compatible lens options to suit virtually any size of room and throw requirements. New quick-release bayonet mount simplifies quick lens exchange.

- **Supports HDBaseT**

Simpler, more cost-effective installation and connectivity with digital transmission of HD video, audio and

networking/control over a single Ethernet cable.

- **Create super-size displays with Edge Blending**

Seamlessly join accurately colour-matched images from multiple projectors, simplifying creation of stunning super-size displays for corporate and education.

- **Project onto non-flat surfaces with Image Warping**

Easily correct image geometry for natural-looking projections – even on convex or concave surfaces. Corner and edge correction can be easily adjusted with the supplied remote and on-screen menu.

- **Quiet operation**

Low fan noise ensures discreet, unobtrusive operation in quiet environments from museums and galleries to lecture theatres.

- **Slim, attractive new blend-in design**

The slim, stylish case design features a flat top surface that blends in discreetly when the projector is ceiling mounted. The clean appearance is accentuated by a new terminal cover that reduces cable clutter.

- **Picture Mode**

New Picture Mode ensures great-looking pictures in any presentation conditions. Select Standard, Dynamic, Brightness Priority or Multi Screen mode for optimised image quality, with any source and in every room.

- **Simple set-up with friendly new Installation menu**

Easily adjust projector settings with remote commander, including warping and edge blending.

- **Project Side by Side**

Project images from two inputs at the same time: ideal for applications such as video conferencing and medical training where two images need to be seen simultaneously.

Technical Specifications

Display system	
● Display system	3 LCD system

Display device	
● Size of effective display area	0.76" (19 mm) x 3 BrightEra LCD Panel, Aspect ratio: 16:10
● Number of pixels	6,912,000 (1920 x 1200 x 3) pixels

Projection lens *1	
● Focus	Powered
● Zoom - Powered/Manual	Powered
● Zoom - Ratio	Approx. x 1.6
● Throw ratio	1.39:1 to 2.23:1
● Lens shift - Powered/Manual	Powered
● Lens shift - Range Vertical	-5%, +60%
● Lens shift - Range Horizontal	+/- 32%

Light source	
● Type	Laser diode

Filter cleaning / replacement cycle (Max.)*2	
● Filter cleaning / replacement cycle (Max.)	20000 H (service maintenance)

Screen size	
● Screen size	40" to 600" (1.02 m to 15.24 m) (measured diagonally)

Light output	
● Mode: High	4100 lm
● Mode: Standard	3000 lm

Color light output	
● Mode: High	4100 lm
● Mode: Standard	3000 lm

Contrast ratio (full white / full black) *3	
● Contrast ratio (full white / full black)	10000:1

Displayable scanning frequency	
● Horizontal	15 kHz to 92 kHz
● Vertical	48 Hz to 92 Hz

Display resolution	
● Computer signal input	Maximum display resolution: 1920 x 1200 dots *4
	NTSC, PAL, SECAM, 480/60i, 576/50i, 480/60p, 576/50p, 720/60p, 720/50p, 1080/60i, 1080/50i

● Video signal input	The following items are available for digital signal (HDMI input) only; 1080/60P, 1080/50p, 1080/24p
----------------------	--

Color system	
● Color system	NTSC3.58, PAL, SECAM, NTSC4.43, PAL-M, PAL-N, PAL60

Keystone correction (Max.)	
● Horizontal	+/- 30 degrees
● Vertical	+/- 30 degrees

INPUT OUTPUT (Computer/Video/Control)	
● INPUT A	RGB / Y PB PR input connector: Mini D-sub 15 pin (female) Audio input connector: Stereo mini jack
● INPUT B	DVI input connector: DVI-D 24-pin (single link), HDCP support Audio input connector: Shared with INPUT A
● INPUT C	HDMI input connector: HDMI 19-pin, HDCP support Audio input connector: HDMI audio support
● INPUT D	HDBaseT interface connector: RJ45, 4 play (Video, Audio, LAN, Control)
● VIDEO IN	Video input connector: BNC Audio input connector: Shared with input A
● OUTPUT A	Monitor output for Input A Connector: Mini D-sub 15-pin (female) Audio output connector: Stereo mini jack
● OUTPUT B	Monitor output for Input B Connector: DVI-D 24-pin (single link), HDCP not supported Audio output, Monitor out connector: Stereo mini jack
● REMOTE	D-sub 9-pin (male) / RS232C
● LAN	RJ45, 10BASE-T/100BASE-TX
● IR (Control S)	Stereo mini jack, Plug in power DC5V

Acoustic Noise	
● Lamp mode: Standard	28 dB

Operating temperature / Operating humidity	
● Operating temperature / Operating humidity	0°C to 40°C (32°F to 104°F) / 20% to 80% (no condensation)

Storage temperature / Storage humidity	
● Storage temperature / Storage humidity	-10°C to +60°C (14°F to +140°F) / 20% to 80% (no condensation)

Power requirements	
● Power requirements	AC 100 V to 240 V, 4.5 A to 1.9 A, 50 Hz / 60 Hz

Power consumption	
● AC 100 V to 120 V	Mode: High: 370 W
● AC 220 V to 240 V	Mode: High: 355 W

Power Consumption (Standby Mode)	
● AC 100 V to 120 V	0.5W (when "Standby mode" is set to "Low")
● AC 220 V to 240 V	0.5W (when "Standby mode" is set to "Low")

Power Consumption (Networked Standby Mode)	
● AC 100 V to 120 V	15.0 W (All Terminals and Networks Connected) (when "Standby Mode" is set to "Standard")

● AC 220 V to 240 V	13.3 W (All Terminals and Networks Connected) (when "Standby Mode" is set to "Standard")
Standby Mode / Networked Standby Mode Activated	
● Standby Mode / Networked Standby Mode Activated	Approx. 10 Minutes
Dimensions (W x H x D)	
● Dimensions (W x H x D) (without protrusions)	460 x 169 x 515 mm 18 1/8 x 6 21/32 x 20 9/32 inches
Mass	
● Mass	16 kg (34 lb)
Supplied accessories	
● Remote commander	RM-PJ27
Optional accessories	
● Projection Lens	VPLL-3003 / 3007 / Z3009 / Z3024 / Z3032
Notes	
● *1	With supplied standard lens
● *2	This figure is expected maintenance time, not guaranteed time. The actual value depends on the environment and how the projector is used.
● *3	The value is average.
● *4	Available for VESA Reduced Blanking signal.

Ceiling Brackets



PSS-650
Projector Ceiling Bracket for Installation



PSS-650P
Projector Ceiling Bracket for Installation

Lenses



VPLL-3003
Projection Lens for the VPL-F Series



VPLL-3007
Projection Lens for the VPL-F Series



VPLL-Z3009
Short focus zoom lens



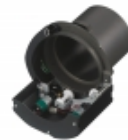
VPLL-Z3024
Projection Lens for the VPL-F Series



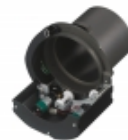
LKRA-FL1
Optical Filter for 3D projection



LKRA-FL2
Optical Filter for angular projection



PK-F60LA1
Lens Adaptor for the discontinued VPLL-1032 optional Lens to use with the VPL-FHZ57, FHZ60, FHZ65, FH60, FH65, VPL-FWZ65, FWZ60 FW65 and FW60 Installation Projectors



PK-F60LA2
Lens Adaptor for the discontinued VPLL-1024 optional Lens to use with the VPL-FHZ57, FHZ60, FHZ65, FH60, FH65, VPL-FWZ65, FWZ60 FW65 and FW60 Installation Projectors



PK-F60LA3
Lens Adaptor for the discontinued VPLL-Z2009 optional Lens to use with the VPL-FHZ57, FHZ60, FHZ65, FH60, FH65, VPL-FWZ65, FWZ60 FW65 and FW60 Installation Projectors



PK-F60LA4
Lens Adaptor for the discontinued VPLL-2007 optional Lens to use with the VPL-FHZ57, FHZ60, FHZ65, FH60, FH65, VPL-FWZ65, FWZ60, FW65 and FW60 Installation Projectors



VPLL-Z3032

Long focus zoom lens

Other Accessories