

## New Document Camera

# ELPDC21 & ELPDC13

ELPDC21

ELPDC13

### HIGH PERFORMANCE

#### 2M High Pixels Resolution by 1/2.7" CMOS sensor

Brighter & Clearer image produced by Full HD sensor with max. 1080p resolution via HDMI output.

#### Large image capture area (Max. A3 size)

With 11.7" x 20.7" \*capture area, you can share information more flexibility.

(\*at 1080p output resolution)

#### 12x Optical\* & Up to 16x Digital Zoom^

Powerful 12x optical zoom lens unit allows you to capture clear and loss-less magnified image.

(\*Only for ELPDC21 ^Only for ELPDC13)



#### High Frame Rate

The max. 30fps display delivers smooth and vivid live images.

(fps is defined depends on the output resolution)

### ENHANCED PC LESS FUNCTION

#### New collaboration with Epson Projector\*

This new collaboration allows teachers to control the document camera by using Epson interactive projector.

(\*Only for interactive projector)



#### Simply One-touch of Video Recording\*

One touch video capturing is able to reload from SD Card / USB external memory.

(\*Video recording is at 720p resolution)

### ADVANCED FUNCTIONS

#### Auto detection of Epson projector resolution

Both ELPDC21 & ELPDC13 can recognize the output resolution of Epson projector and optimize the output resolution automatically.



#### Split Screen Function

The split screen function allows the live image of an object being captured to be displayed alongside an image stored on the internal/external memory.

#### One-Touch Auto Focus

A one-push auto focus button for ease to correct the image from blur to clear.



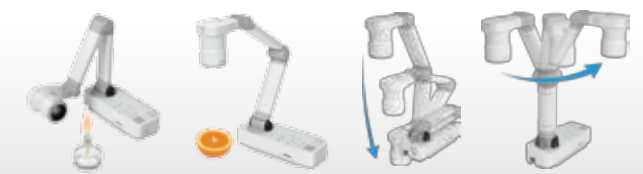
#### Microscope Capability

The included microscope adapter make set-up easy and compatible with 20-34mm eyepieces from a variety of different microscopes.

### USER FRIENDLY DESIGN

#### Image Rotation

Capture images of a 3D objects/whiteboard/chalkboard can be easily by adjusting the arm position and rotating camera head.



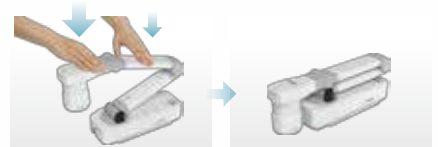
#### Security Design

Not only equipped with a slot for a Kensington Lock, both ELPDC21 & ELPDC13 also has a security bar and security screw hole.



#### Portability

The new mechanical structure allows users to fold and easy to store.



# New Document Camera

## ELPDC21 & ELPDC13

SPECIFICATIONS	MODEL	ELPDC21	ELPDC13	
Video	Pick-up device	1/2.7" CMOS Sensor		
	Effective pixels	2M Pixels		
	Frame rate	Max 30fps		
	Output	VGA	SXGA(1280*1024)/ XGA(1024*768)/ WXGA(1280*800)/ HD(1360*768)/1080p(1920*1080)	
		HDMI	480p/720p/1080p	
	USB - B	VGA/SVGA/XGA/SXGA/WXGA/720p/1080p		
Optical system	Lens	F=3.4-5   F=2		
	Shooting Area	Max 11.7"x20.7" at 1080p output resolution / 11.7""*16.5" at XGA resolution		
	Zoom	Max 12x   N/A		
	Focus	Auto (need to press "AF Button")		
Illumination System	Upper	White LEDx2		
General	Operating Temperature	5°C to 35°C <41°F to 95°F>		
	Operating Humidity	20%-80%		
	Dimensions Open	W270xD502xH328mm   W270xD447xH317mm		
		Folded	W375xD120xH122mm   W367xD120xH122mm	
	Weight	2.6kg   2.5kg		
	Theft Proof	Kensington Lock	yes	
		Security bar	yes	
Security lock hole		yes		
Function	Zoom	Total	Max 120x	Max 16x
		Optical	Max 12x	N/A
		Digital	10x	16x
	Freeze	yes		
	Focus adjustment	yes		
	LED	yes		
	Brightness adjustment	yes		
	Contrast	yes		
	Negative	yes		
	Black and White	yes		
	Split Screen	yes		
	Slideshow (need external SD Card)	yes		
	Video Capture	yes		
	Digital Scroll	yes		
	Flicker reduction	yes		
	Image rotation(0/180 degrees)	yes		
	Source(PC/DC)	yes		
	White balance	Auto/Fluorescent/ Incandescent/Cloudy/ Daylight		
	Storing video on SD card	yes (at 720p resolution)		
	Playing the video	yes		
	Image mode	Text/Normal/Display		
	Auto detect aspect ratio	yes		
	Digital Zoom	yes (On, Off)		N/A
	Power	Power Supply Voltage	100V-240V AC/DC 12V	
		Power frequency	50/60Hz	
		Output voltage of AC Power adapter	DC 12V	
		Power Consumption	13W	
Power Consumption (Stand-by mode)		Less than 0.5W (0.48W)		
Image rotation	Horizontal	-90 degrees		
	Vertical	±90 degrees		
MIC		yes (Internal MIC)		
Memory	Internal & USB SD Card	N/A		
		SD/SDHC compatibility *No SDXC support		
	File Format (Still image) /Resolution	JPEG/Captured resolution is 1920*1080		
	File Format (Movie) /Resolution	AVI/720p		

USB interface class	USB Video Class	
	USB Audio Class	
	TWAIN (Only for Windows system)	
	USB Mass storage Class	


Compatibility for OS	PC	Windows XP SP2 or later, Windows Vista, Windows 7/ Mac X 10.5, 10.6 and 10.7

Accessories	USB Cable	yes (USB-B)
	External AC Power adapter with Power cable (30W)	yes
	Application software	yes
	Remote control	yes
	AA Batteries	yes(2pcs)
	Quick set-up guide	yes
	Microscope adapter	yes
	VGA Cable	yes
	User's Manual Set	CD-ROM
	Soft Carrying Case	yes

Application software	Name	ArcSoft application software for Epson document camera / Button manager for Epson document camera / TWAIN driver for Epson document camera
	Language	13 Languages
	Annotation(Live/Still image)	N/A
	Edit	yes
	Preview	yes
	Video Capture	yes
	Still image capture	yes
	Time Lapse	yes
	Web Upload	yes
	Intelligent file management	yes
format	Still image	JPG/BMP
	Video(For windows)	WMV/MPG/AVI
	Video(For MAC)	MOV

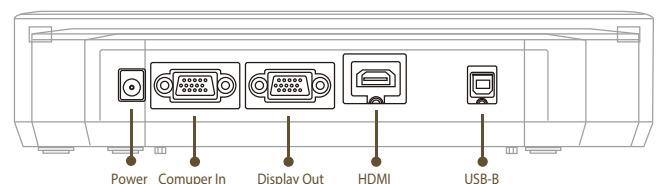
TWAIN driver	TWAIN driver and device driver	Only for Windows
--------------	--------------------------------	------------------

**Warranty Service**  
2 Years Carry-in Warranty Service to be provided for local purchase only.



# The warranty service can be extended by purchasing Epson Coverplus Extended Warranty.  
For more information, please contact epson customer support.

### Connector Panel



### Epson Hong Kong Limited

Unit 715-723, 7/F Trade Square, 681 Cheung Sha Wan Road, Cheung Sha Wan, Kowloon, H.K.  
\* Please call our sales hotlines for demonstration at our showroom.

**Epson Authorized Collection Point**  
( Hong Kong Island )  
Room 1003, Block B, Sea View Estate,  
4-6 Watson Road, North Point, Hong Kong

**Epson Authorized Collection Point**  
( Kowloon )  
Room 1006-1008, Park-In Commercial Centre,  
56 Dundas Street, Mong Kok, Kowloon, Hong Kong

**Epson Authorized Customer Service Centre**  
( Kowloon East )  
Wah Fung Computer Services Ltd.  
Unit 901, 9/F, Westin Centre, 26 Hung To Road,  
Kwun Tong, Kowloon, Hong Kong

**Epson Authorized Collection Point**  
( New Territories )  
Unit 7, 21/F, CCT Telecom Building,  
11 Wo Shing Street, Fo Tan, New Territories

HK Sales Hotline : (852) 2827 8711  
HK Technical Hotline : (852) 2827 8911  
Macau Hotline : (853) 2850 8065

URL: [www.epson.com.hk](http://www.epson.com.hk)

JAN16-01-PROJECTOR