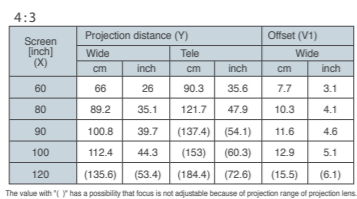
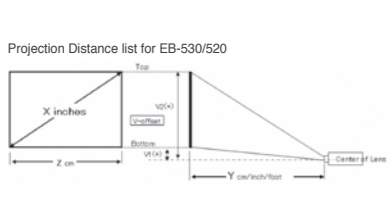


Model	EB-536Wi <i>Interactive!!!</i>	EB-535W	EB-525W	EB-530	EB-520
Projection System	RGB liquid crystal shutter projection system				
Specification of LCD	Size		0.59-inch with MLA (D8)		0.55-inch with MLA (D8)
Main Parts	Pixel Number		1,024,000 dots (1280 x 800) x 3		786,432 dots (1024 x 768) x 3
	Native Resolution		WXGA (16:10)		XGA (4:3)
Projection Lens	1.35x Digital zoom / Focus (Manual)				
	F-number = 1.6 / Focal Length = 6.4mm				
Lamp	Type	215 W UHE	200 W UHE	215 W UHE	200 W UHE
	Life	*5000 hours (Power consumption: Normal) 10000 hours (Power consumption: ECO)*			
Screen Size (Projected Distance)	53" to 116" [0.54 to 1.22 m](Zoom:Wide)		50" to 108" [0.54 to 1.22 m](Zoom:Wide)		
Offset	9.51:-1		12.8:-1		
Light Output (Brightness)	3400lm / 1900lm		2800lm / 1700lm	3200lm / 1800lm	2700lm / 1600lm
Color Light Output (Color mode: Dynamic, Zoom: Wide, Auto iris: Off)	3400lm		2800lm	3200lm	2700lm
Contrast (Color mode: Dynamic, Power consumption: Normal, Zoom: Wide, Auto iris: On)	16000:1				
Internal Speaker(s)	Sound Output				
Adjustment Function	Settings	Geometric Correction	V Keystone	Yes	Yes
		H Keystone	Yes (OSD, H-Keystone Adjuster)	-15 to +15 degrees	Yes
		Auto Keystone Correction	Yes (Vertical)	-15 to +15 degrees	N/A
		Quick Corner	Yes		
Video I/O	IN	Analog	D-sub 15pin	RGB, Component, RGB-Video	2 (Blue molding)
			RCA	Composite	1 (Yellow)
			Min DIN 4pin	S-Video	1
			Digital	HDMI	1
Audio I/O	IN	2 RCA (White x1, Red x1)	D-sub 15pin	RGB, RGB-Video	1 (Black molding) (Output signal : Computer 1 only)
			RCA	Composite	1
			Min DIN 4pin	S-Video	1
			Digital	HDMI	1
Mic. I/O	IN	Stereo mini	D-sub 15pin	RGB, RGB-Video	1 (Black molding) (Output signal : Computer 1 only)
			RCA	Composite	1
Control I/O	RS-232C	D-sub 9pin	D-sub 15pin	RGB, RGB-Video	1 (Black molding) (Output signal : Computer 1 only)
			RCA	Composite	1
USB-I/O	Type A	Stereo mini	D-sub 15pin	RGB, RGB-Video	1 (Black molding) (Output signal : Computer 1 only)
			RCA	Composite	1
Network I/O	Wired LAN	RJ45	D-sub 15pin	RGB, RGB-Video	1 (Black molding) (Output signal : Computer 1 only)
			RCA	Composite	1
Wireless Specification (Optional Wireless LAN Unit use)	Supported Speeds for each mode	Type A (for ELPAP07 : Option)	D-sub 15pin	RGB, RGB-Video	1 (Black molding) (Output signal : Computer 1 only)
			RCA	Composite	1
Operating Angle of Tilt (Limitation for interactive use)	Projection Direction	Vertical	D-sub 15pin	RGB, RGB-Video	1 (Black molding) (Output signal : Computer 1 only)
			RCA	Composite	1
Direct Power Off	Yes	Instant off	D-sub 15pin	RGB, RGB-Video	1 (Black molding) (Output signal : Computer 1 only)
			RCA	Composite	1
Power Consumption	220-240V Area	Lamp On (Power consumption: Normal)	D-sub 15pin	RGB, RGB-Video	1 (Black molding) (Output signal : Computer 1 only)
			RCA	Composite	1
Dimension	Exclude Feet (W x H x D)	Lamp On (Power consumption: ECO)	D-sub 15pin	RGB, RGB-Video	1 (Black molding) (Output signal : Computer 1 only)
			RCA	Composite	1
Weight	Approx. 8.5 lbs. / 3.9 kg	Approx. 8.2 lbs. / 3.7 kg	D-sub 15pin	RGB, RGB-Video	1 (Black molding) (Output signal : Computer 1 only)
			RCA	Composite	1
Fan Noise	Power consumption: Normal / ECO	37 dB / 29 dB	D-sub 15pin	RGB, RGB-Video	1 (Black molding) (Output signal : Computer 1 only)
			RCA	Composite	1

Easy Interactive Part		
Interactive Unit Specification	Support Screen Size 53" to 116" [0.54 to 1.22 m](Zoom:Wide)	
Technology	Infrared	
Input devices	Digital Pen (Easy Interactive Pen A and B)	
Connection to the computer	USB	
Supports multiple input simultaneously	Yes	
Calibration	Auto / Manual (25points)	
Functions	Hover, Right click, Auto Adjust Pen Area	
Pen Unit Specification	Normal Pen	Size 161 mm x 24 mm dia. (maximum)
	Weight	30 g (Excluding a Battery)
	Side Button	Yes (Battery check only)
	Battery	AA x 1
PC Interactive Tool	Driver Install	Windows, Linux(Ubuntu); Interactive Function can be used without installation of driver
	Multi pen support	Yes (with Easy Interactive Tools Ver.3.0) Up to 2 types of pens. (Easy Interactive Pen A and B)
PC Free Annotation Tool	Driver Install	No need
	Multi pen support	Yes Up to 2 types of pens. (Easy Interactive Pen A and B)
PC applications	Whiteboard function	Yes
		Easy Interactive Tools Ver 3.05 (for Windows) Easy Interactive Tools Ver 3.05 (for Mac OS X) Easy Interactive Driver Ver 3.00 (for Mac OS X)

SUPPLIED ACCESSORIES	
Remote Control	with Battery (AA x 2)
Easy Interactive Pen (A: Orange)	ELPPN04A (only for EB-536Wi) with Battery (AA x 2)
Power Cable	4.5m
USB Cable	5m (only for EB-536Wi)
Computer Cable	1.8m
Password Protect sticker	attached
Bundled Software	Easy Interactive Tools Ver 3.05 (for Windows) (only for EB-536Wi) Easy Interactive Tools Ver 3.05 (for Mac OS X) (only for EB-536Wi) Easy Interactive Driver Ver 3.00 (for Mac OS X) (only for EB-536Wi) EasyMP Network Projection

OPTIONAL ACCESSORIES	
Spare Lamp	ELPLP87
Air Filter Set	ELPAF47
Soft Carrying Case	ELPKS66
Wireless LAN Unit	ELPAP07
Quick Wireless Connection USB Key	ELPAP09
Easy Interactive Pen 1	ELPPN04A
Easy Interactive Pen 2	ELPPN04B
Replacement Pen Tips	ELPPS02



EPSON Exceed Your Vision
Epson Hong Kong Limited
 Unit 715-723, 7/F Trade Square, 681 Cheung Sha Wan Road, Cheung Sha Wan, Kowloon, H.K.
 * Please call our sales hotlines for demonstration at our showroom.

- Epson Authorized Customer Service Centre (Kowloon East)**
Wah Fung Computer Services Ltd.
Unit 901, 9/F, Westin Centre, 26 Hung To Road, Kwun Tong, Kowloon, Hong Kong
- Epson Authorized Collection Point (Hong Kong)**
Room 1003, Block B, Sea View Estate,
4-6 Watson Road, North Point, Hong Kong
- Epson Authorized Collection Point (Kowloon)**
Room 1006-1008, Park-In Commercial Centre,
56 Dundas Street, Mong Kok, Kowloon, Hong Kong
- Epson Authorized Collection Point (New Territories)**
Unit 7, 21/F, CCT Telecom Building,
11 Wo Shing Street, Foton, New Territories

HK Sales Hotline : (852) 2827 8711
 HK Technical Hotline : (852) 2827 8911
 Macau Hotline : (853) 2850 8065
 URL: www.epson.com.hk

OCT14-05-PROJECTOR

Multimedia Projector

EB-520 / EB-530

EB-525W / EB-535W

EB-536Wi

EPSON
 EXCEED YOUR VISION



EB-520 / EB-530 / EB-525W / EB-535W

EB-536Wi (Interactive Model)

Short Throw Projector

Turn an Existing Whiteboard into a Large Interactive Board

Advanced Usability

- Brighter Projection (3400 lm)
- Wide-Ranging Connectivity
- Less Shadow and Less Space
- Horizontal Keystone & Quick Corner

Interactivity (EB-536Wi)

- Multi-Use Interactive
- Auto Calibration
- Interactivity with no PC

Short Focus Lens

Project An Impressive Screen Size From Close Range

It adopts a newly developed ultra large caliber, high precision lens, allowing it to project a 60 inch screen from as near as 65cm.

EB-530

EB-525W

EB-520

EB-535W

EB-536Wi

Short Throw

Bigger Image

The short throw allows the projector to be positioned closer to the screen for fewer shadows. EB-536Wi (535W/525W) can fill an 80-inch screen from just 83 cm away.

Non-Blinding

Even when you stand directly in front of the screen, the light rarely reaches your face. With no glare in your eyes, you'll find it far more pleasant and stress-free to be out front when using the projector.

Significantly Reduced Shadow Interference

With hardly any shadows now cast on the screen, the audience's view of your presentation is clear and unobstructed.

EPSON EB-536Wi



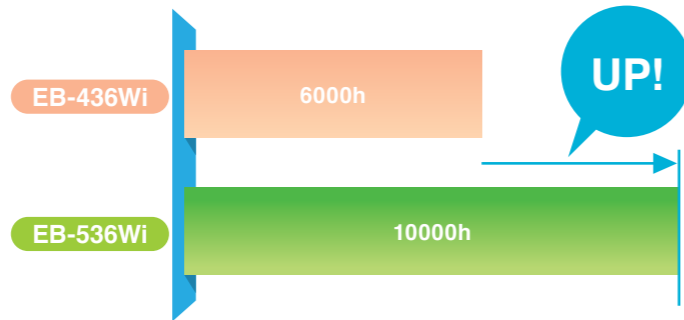
Other Projector



Long Lamp Life

The long 10,000H lamp life saves time and money by reducing the frequency of costly lamp replacements.

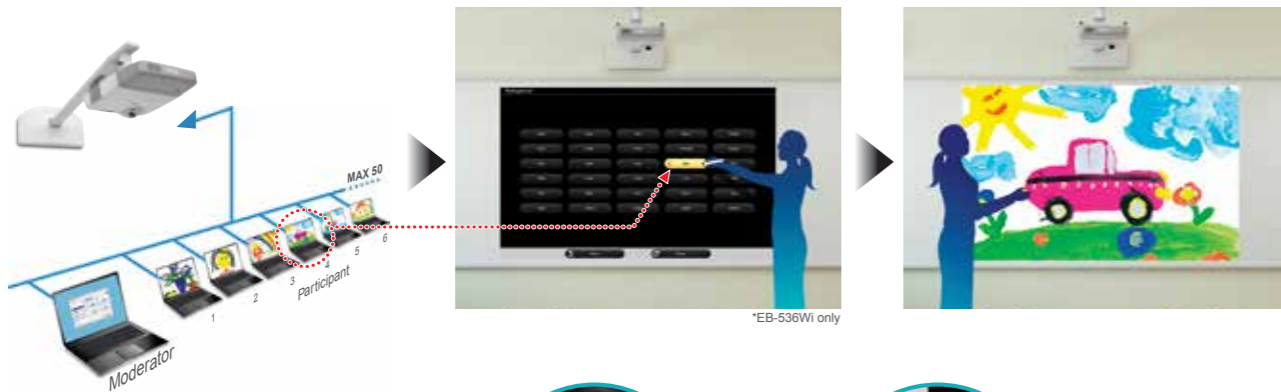
*Comparison in ECO mode.



Multi PC Projection

The Multi PC Projection feature allows a network of up to 50 PCs to be connected to a single projector. A list of connected devices, including PCs, can be accessed from the projection screen where you are free to choose which device to project and annotate on the screen as you like.

*Easy Multi PC Projection Software allows a host PC to act as a Moderator who can then select which devices to project.



Smooth Desktop Setting

The Horizontal Keystone Adjuster & Auto Vertical Keystone allow for quick and intuitive adjustment of the projection screen even with desktop use. It's also possible to activate Auto Calibration with a simple push of the button on the projector itself, so you have immediate access to the interactive functions and can begin your meeting without delay.



Carrying Case

Horizontal Keystone Adjuster
Auto Vertical Keystone

One Push Auto Calibration (536Wi only)

Interactivity (EB-536Wi only)

Higher Response Speed / Accuracy

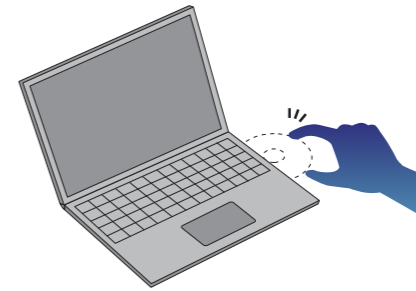
The higher response speed and accuracy makes drawing as immediate and responsive as using a pen on a whiteboard.



Driverless Installation

*Windows / Linux (Ubuntu) only

Since no drivers are necessary, you don't have to set up your PC before using the projector. Simply connect any PC to start using the interactive functions.



PC-Less Functionality

Interactive functions are also available without a PC connection. So drawing on the projected screen is now possible when connected to devices such as a document camera or video devices. Even when there is no input source, we can write on the projected screen like a whiteboard.



On-Screen Projector Operation

Basic projector operation (power ON, source change, volume, mute, etc.) can be done by simply clicking the icons shown on the screen. Even if the remote control is not close at hand, the projector can be easily operated from the screen.

Source change



Dual Pen Interactivity

Two people can write simultaneously on the interactive area. Whether used by the teacher and a student, or two students, this function can enhance any lesson. Using 2 pens at the same time doesn't require any special set-up.



Turn an Existing Whiteboard into an Interactive Board (536Wi only)

Interactive projectors can display large images of digital content on an existing classroom whiteboard where you are free to annotate on the projected screen. Because there is no need to set up any new equipment, you can make effective use of existing space.

